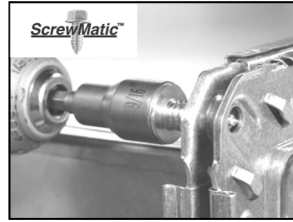


ScrewMatic™ Corners

Detail

ScrewMatic™ Corners are a labor saving corner system designed to greatly reduce field installation time when installing rectangular ductwork.

- Available in CL WARD J, TDC and TDF profiles
- TDC and TDF available in patented Strap-Pak 80 magazine packaging
- ScrewMatic corners accept any 3/8" - 12, ASME B18.6.3 Type AB screws
- Replaces the "nut and bolt" connection method to greatly reduce field labor



CONTACT

Office: 888.973.7600

1100 Ashwood Drive
Suite 1102
Canonsburg, PA 15317
Can

www.clward.com

Profile



ScrewMatic TDC



ScrewMatic TDF



ScrewMatic J Corner

ScrewMatic™ TDC and TDF Corner

- Stamped from 16 gauge
- Available in galvanized, galvanized and aluminized
- Integral gasket guide to promote proper gasket placement
- Works on all automatic corner machinery
- "Sled" tab design for smooth machine insertion
- Available in Strap-Pak packaging of 80 corner "magazines" for quick reloading

ScrewMatic™ J Corner

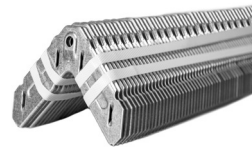
- Stamped from 11 gauge
- Available in galvanized, galvanized and aluminized
- Designed for CL WARD J Flange
- **Screws sold separate**



- 3/8" - 12 x 1" and 1.5" Plated
- **Available in 9/16" & 5/16"** High Hat Head
- ASME B18.6.3 Type AB
- Fits all ScrewMatic corners



Nut Driver - Magnetic
Available in:
9/16" and 5/16"



ScrewMatic Strap-Pak

Packaging

Item Code	Item Description	Packaging	Weight
LCMCGASM	ScrewMatic C Corner	250 pcs/box	35 lbs/box
LCMCGASTPKSM	Strap-Pak ScrewMatic C Corner	400 pcs/box	56 lbs/box
LCMFGASM	ScrewMatic F Corner	250 pcs/box	35 lbs/box
LCMFGASTPKSM	Strap-Pak ScrewMatic F Corner	400 pcs/box	56 lbs/box
LJCGASMNS	ScrewMatic J Corner	200 pcs/box	60 lbs/box
SCREW3/8-12X1	3/8"-12x1, ASME B18.6.3 Type AB Screw	500 pcs/pail	25 lbs/pail
SCREW3/8-12X1.5	3/8"-12x1.5", ASME B18.6.3 Type AB Screw	500 pcs/box	35 lbs/box
SCREW3/8X1TH	3/8"-12x1", ASME B18.6.3 Type AB Screw, Tek Head	500 pcs/pail	25 lbs/pail
SCREW3/8X1.5TH	3/8"-12x1.5", ASME B18.6.3 Type AB Screw, Tek Head	500 pcs/box	35 lbs/box
NUTDRV9/16	9/16" Nut Driver, Magnetic	each	
NUTDRV5/16	5/16" Nut Driver, Magnetic	each	

NOTE: If the screw is used with a ScrewMatic corner and a competing corner, the screw must terminate on the ScrewMatic side of the connection.

