

Tie Rod Loc

Fast and Economical Conduit Tie Rod Installation System

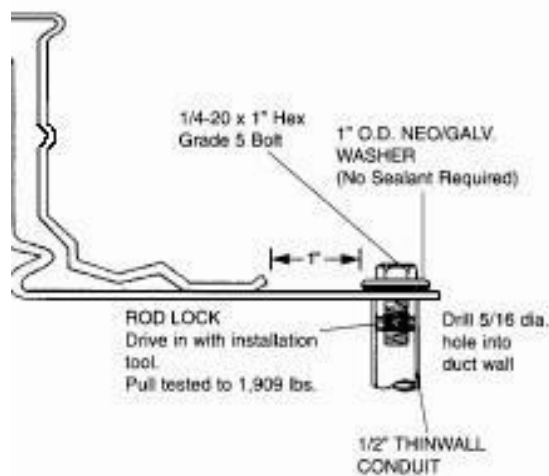
Specifications

- Available in 1/2" and 3/4"
- Pipe insert is friction fitted with internal threads
- Pull out strength of 900 lbs.
- Can be used for both Positive and Negative pressure
- Simple to install

Packaging

- 1/2" Tie Rod Loc - 250 sets/box - 9 lbs. per box

Profile



Also available for 3/4" conduit.

Installation Tool

- Installs both 1/2" and 3/4" Tie Rod Locs in seconds
- Available in single units

W
C.L. WARD
& FAMILY INC.



1460 Delberts Drive
Monongahela, PA 15063
888.973.7600
www.clward.com